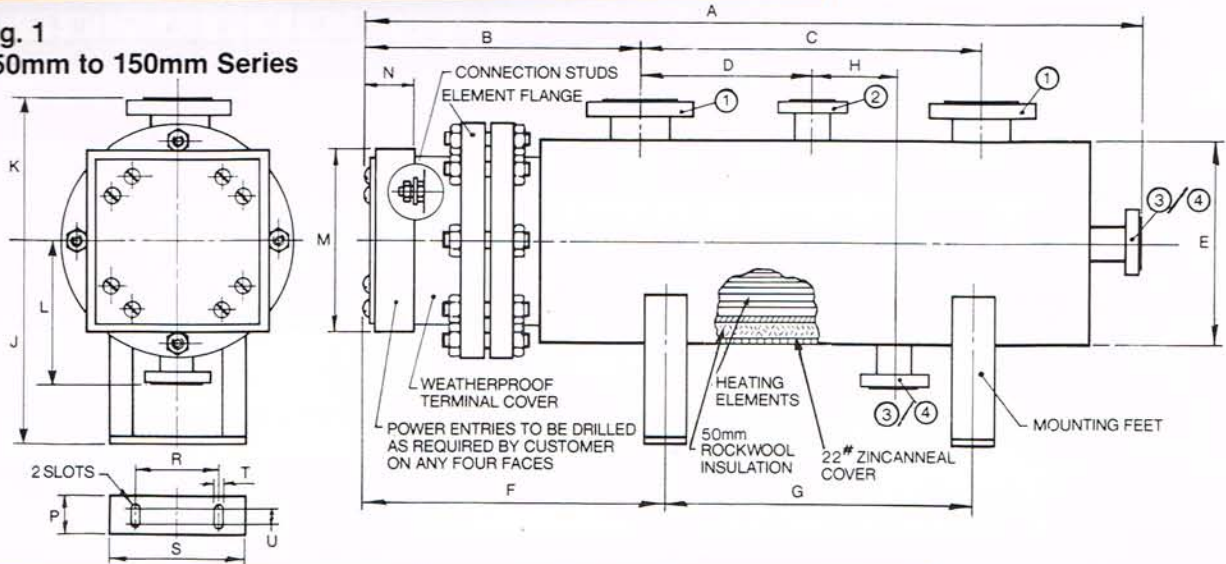


STANDARD SERIES TABLES

Fig. 1
350mm to 150mm Series



350 mm (14") SERIES - REF. FIG 1

CATALOGUE NUMBER	WATTS DENSITY ON SHEATH (kW/m ²)				DIMENSIONS IN MILLIMETRES																CONNECT STAGES		
	77,5	31,0	18,6	12,4	A	B	C	D	E	F	G	H	J	K	L	M	N	P	R	S		T	U
20695 G1	265	106	63,6	42,4	2369	▲	1540	▲	▲	▲	1240	▲	▲	▲	▲	▲	▲	▲	▲	▲	▲	▲	1 or 3
20695 G2	280	112	67,2	44,8	2369		1540				1240												1 or 3
20695 G3	295	118	70,8	47,2	2369		1540				1240												1 or 3
20695 G4	310	124	74,4	49,6	2369		1540				1240												1 or 3
20695 G5	325	130	78,0	52,0	2369		1540				1240												1 or 3
20695 G6	340	136	81,6	54,4	2369	414	1540	700	458	564	1240	300	650	325	325	379	74	100	200	360	25	50	1 or 3
20695 G7	355	142	85,2	56,8	2369		1540				1240												1 or 3
20695 G8	370	148	88,8	59,2	2369		1540				1240												1 or 3
20695 G9	385	154	92,4	61,6	3139		2310				2010												1 or 3
20695 G10	400	160	96,0	64,0	3139	▼	2310	▼	▼	▼	2010	▼	▼	▼	▼	▼	▼	▼	▼	▼	▼	▼	1 or 3
TOTAL POWER: kW					FLANGES To ANSI B 16.5 150lb R.F. 1. Inlet/Outlet Flange: 150 DN 3. Pressure Gauge Flange: 50 DN 2. Relief Flange: 50 DN 4. Drain Flange: 50 DN																		

300 mm (12") SERIES - REF. FIG 1

CATALOGUE NUMBER	WATTS DENSITY ON SHEATH (kW/m ²)				DIMENSIONS IN MILLIMETRES																CONNECT STAGES		
	77,5	31,0	18,6	12,4	A	B	C	D	E	F	G	H	J	K	L	M	N	P	R	S		T	U
20694 G1	205	82	49,2	32,8	2246	▲	1540	▲	▲	▲	1240	▲	▲	▲	▲	▲	▲	▲	▲	▲	▲	▲	1, 2 or 3
20694 G2	220	88	52,8	35,2	2246		1540				1240												1, 2 or 3
20694 G3	235	94	56,4	37,6	2246	356	1540	700	426	506	1240	300	620	300	300	348	74	100	180	330	25	50	1, 2 or 3
20694 G4	250	100	60,0	40,0	2246		1540				1240												1, 2 or 3
20694 G5	265	106	63,6	42,4	2246		1540				1240												1, 2 or 3
20694 G6	280	112	67,2	44,8	2246	▼	1540	▼	▼	▼	1240	▼	▼	▼	▼	▼	▼	▼	▼	▼	▼	▼	1, 2 or 3
TOTAL POWER: kW					FLANGES To ANSI B 16.5 150lb R.F. 1. Inlet/Outlet Flange: 100 DN 3. Pressure Gauge Flange: 50 DN 2. Relief Flange: 50 DN 4. Drain Flange: 50 DN																		



